

# Rodas

## 1 and 2 Leaf Door. Sliding.

### El<sub>2</sub> 60

#### STRUCTURE

2 galvanized steel plates with 1mm sandwich type anti-finger protection.

Leaf thickness: 63mm.

Inner chamber: two 23mm thick rockwool panels and cardboard core plate 15mm thick laminated plaster.

The leaf is formed by a series of panels joined together by screws. The top smoke lid is mounted on the top part (A) and on the side opposite the side smoke lid closing (B), elements that when the leaf is closed, seal the door.

#### ANCHORAGE SYSTEM

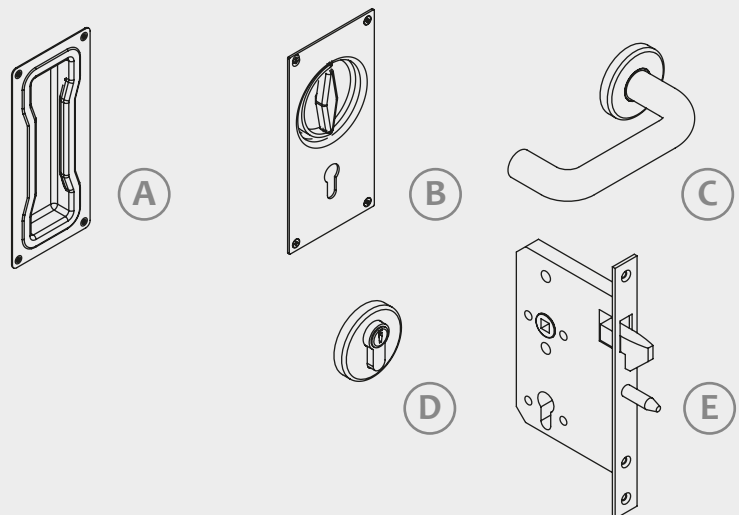
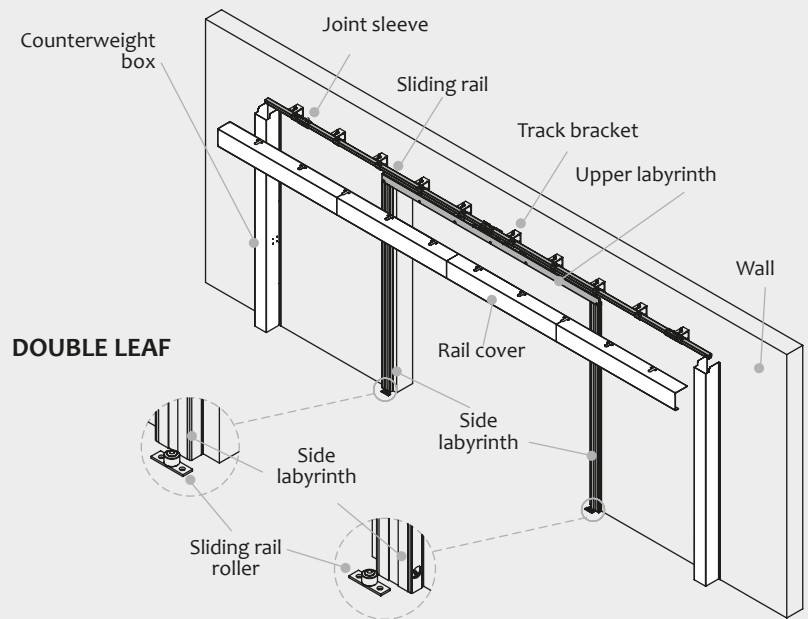
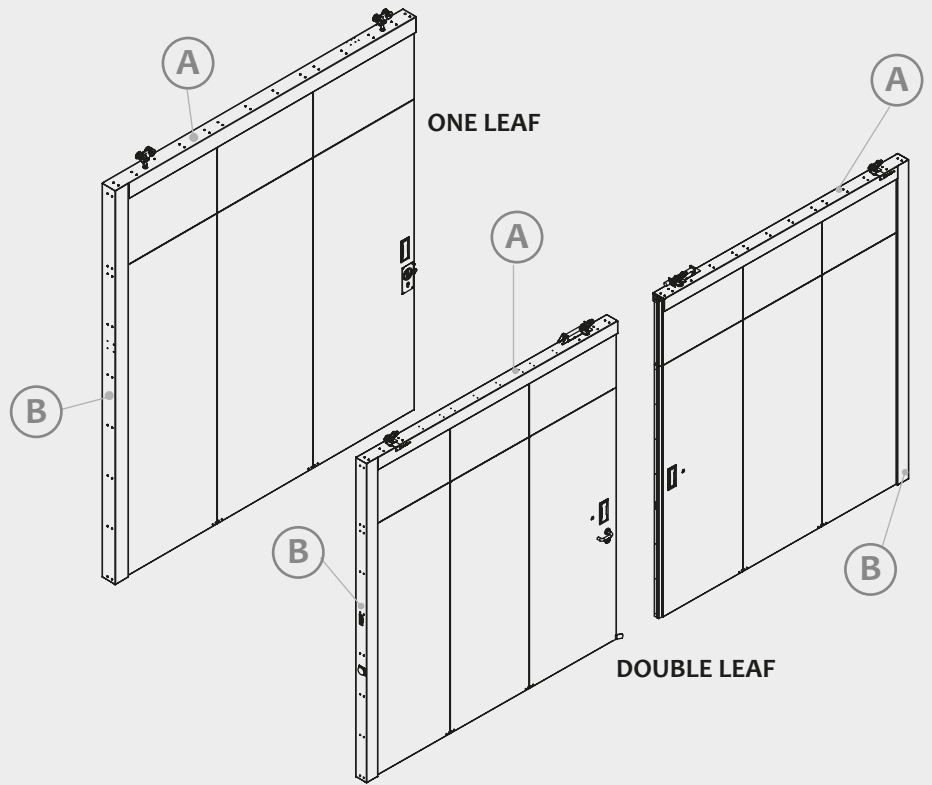
- It is anchored to the wall with a metal plug or welding.
- The guide is covered with a trim and a box is placed on the side of each leaf as counterweight.

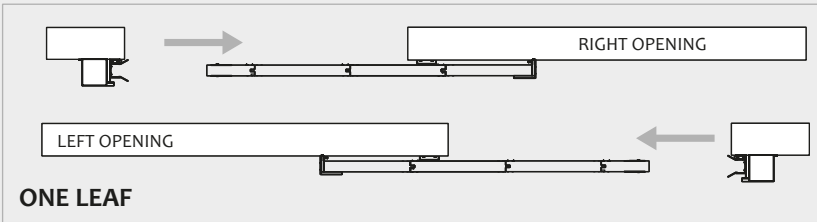
#### LOCKING AND DRIVING SYSTEM

Handle embedded in both sides of the leaves (A).

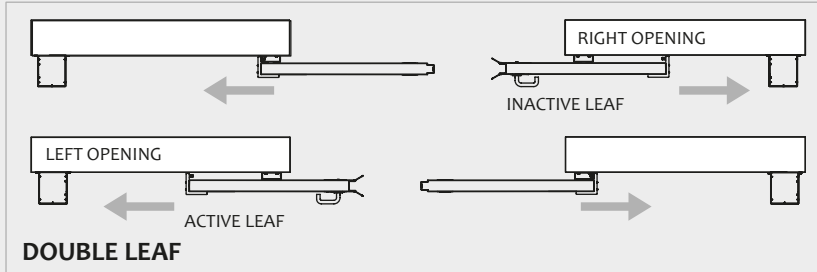
Optionally in the active leaf:

- Embedded handle (B).
- Handle on the outer side in pedestrian access gate (C).
- Rosette cylinder on the inner side in pedestrian access gate (D).
- Hook lock (E).





**ONE LEAF**

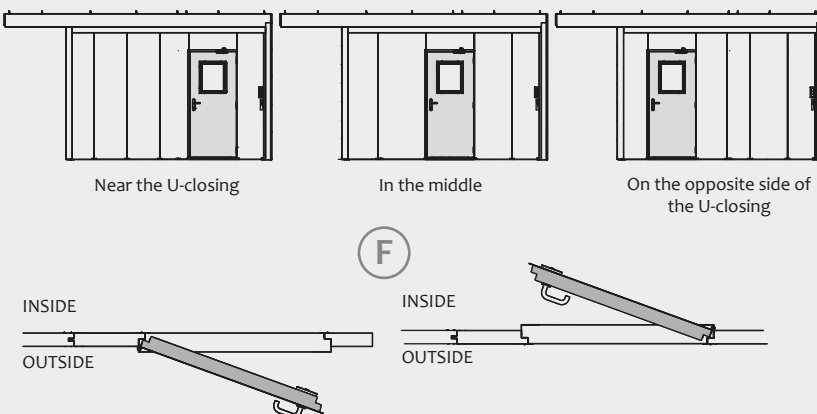


**DOUBLE LEAF**

## OPENING SENSES

The opening is by sliding on the guide, in one or both directions depending on the model of single or double leaf.

	PARTS	HOW DOES IT WORK?
<b>Manual</b>	Counterweight.	Manual opening and counterweight closing.
<b>Fusible térmico</b>	Fusible térmico. Contrapeso	Fusible térmico. El fusible térmico actúa cuando alcanza una temperatura de 74° C, permitiendo que la hoja se cierre por la acción del contrapeso en caso de incendio. En cualquier caso la apertura y cierre son manuales.
<b>Semi-automatic</b>	Blocking device. G open/close programme. CLOSE/RESET push buttons. Counterweight. Photocell option.	Manual opening with closing controlled by counterweight. A photocell may be fitted which, if an obstacle is detected, stops the door moving.
<b>Automatic</b>	Blocking device. E8 open/close programme. OPEN/CLOSE/RESET/STOP/EMERG. RESET PUSH buttons. Counterweight. Photocell option.	Motorised Opening with closing controlled by counterweight. A photocell may be fitted which, if an obstacle is detected, stops the door moving.

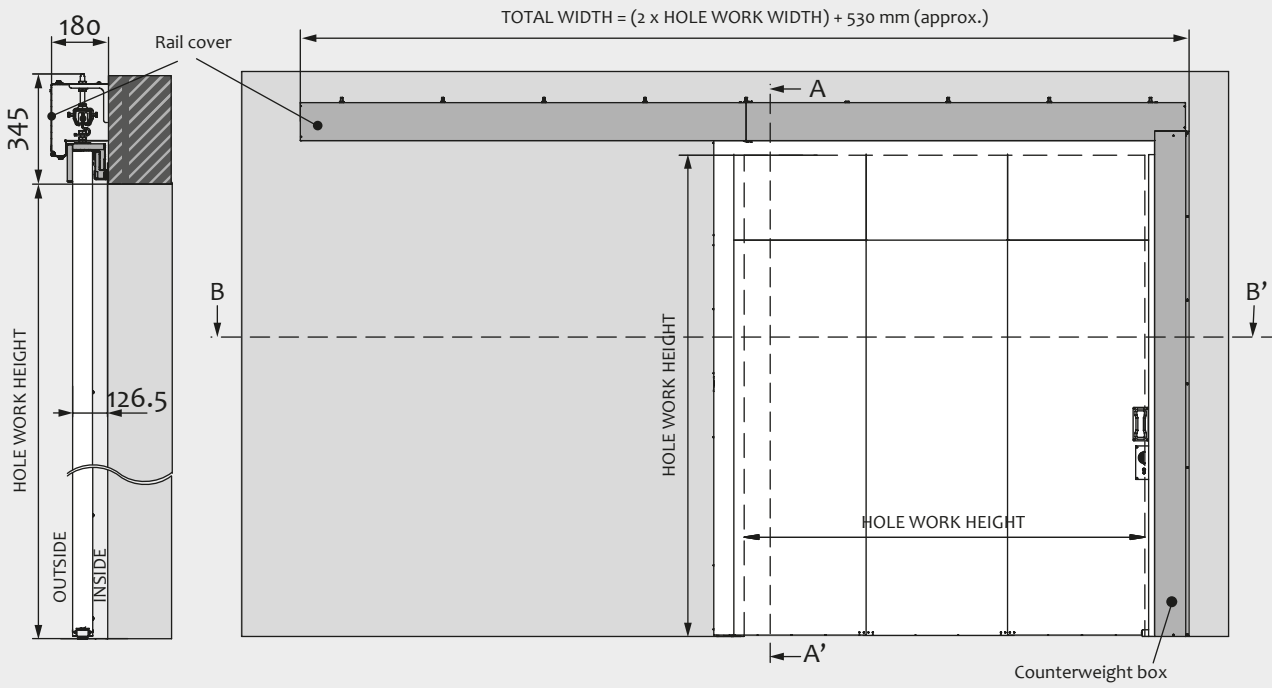


## GATE

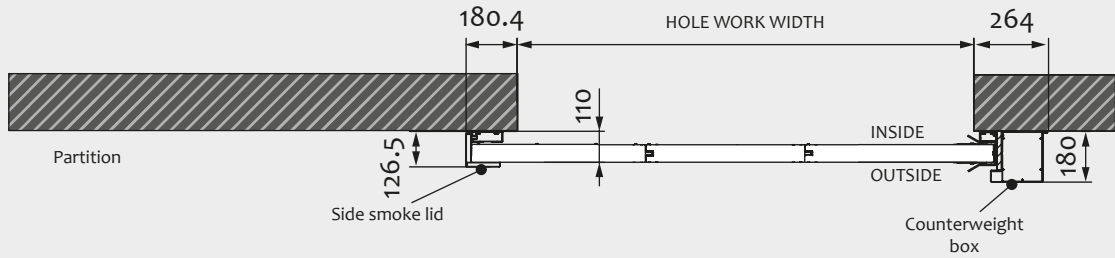
Optionally the Rodas Door can incorporate pedestrian access gate with different locations (F).

# MEASUREMENTS ONE LEAF

## SECTION A-A'

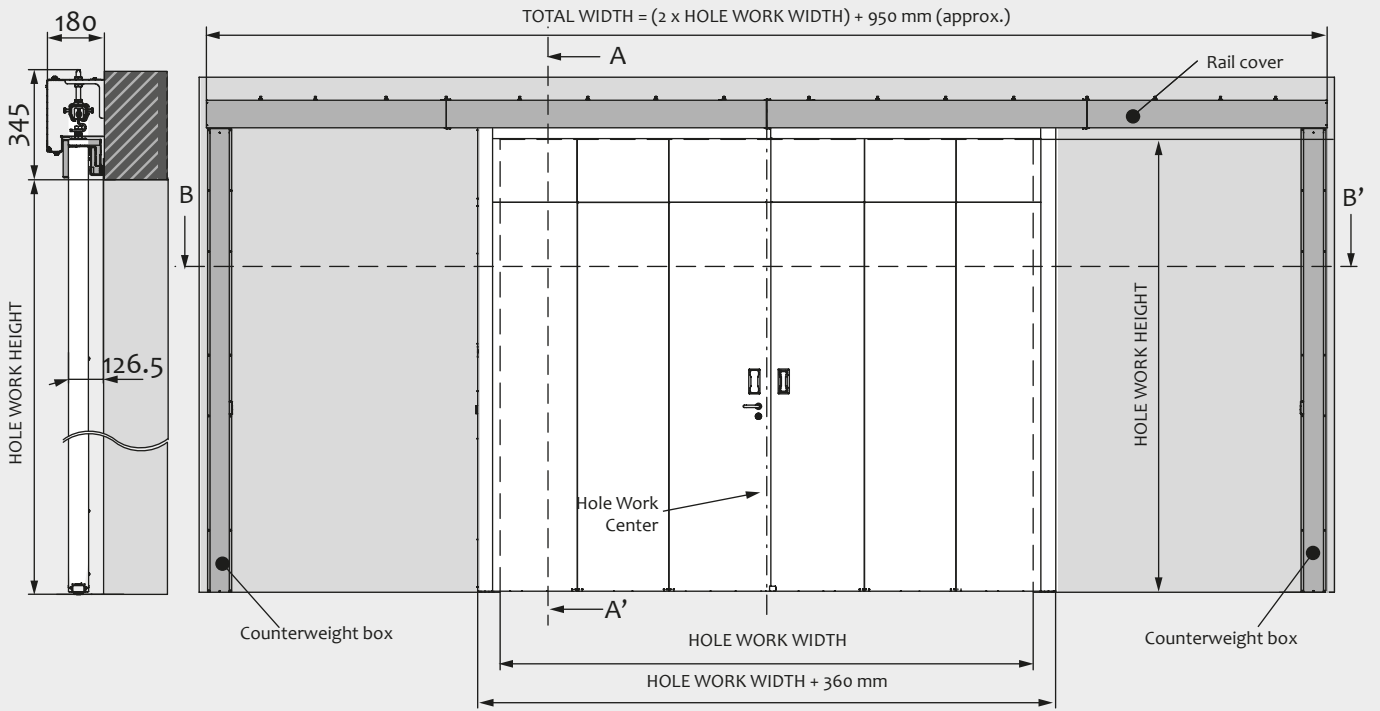


## SECTION B-B'



# MEASUREMENTS DOUBLE LEAF

## SECTION A-A'



## SECTION B-B'

